



TMX Software



**Simplicity, efficiency
and intelligence**

TRIMBLE MX PUBLISHER

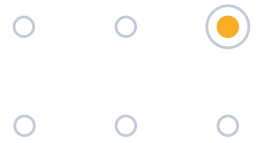
Publish unlimited geospatial data on the web.

Mobile mapping operations collect massive data sets very quickly. It is important to have the right software tools to simplify data organization, feature extraction, and customer collaboration.

With Trimble® MX Publisher, share mobile mapping data across your organization and give stakeholders access via their web browser. Enable multiple users to access and use the data for visualization, measurement, and local feature extraction. Combine point cloud data, panoramic and planar imagery, vector data and raster resources as well as 3D models into one single Trimble MX Publication.

Find out more at:
[geospatial.trimble.com](https://www.geospatial.trimble.com)





+ Define data access for individual users and groups

Trimble MX Publisher enables publication administrators to set credentials for individual users and user groups, controlling their access level to the published data.

+ Perform simple but powerful measurements

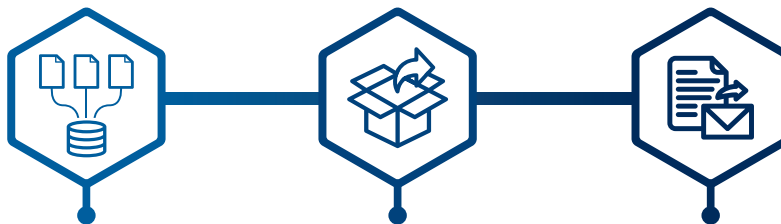
Measure points, lines, area, catenaries, distances or volumes utilizing point cloud data and imagery. Then, save measurement results locally on your PC, connected databases or in common GIS and CAD environments using the available plugins.

+ Integrate with GIS and CAD environments or with your own app

Use the available Trimble MX Publisher Plugins to get access to your mobile mapping data through common GIS and CAD environments such as ArcMap, ArcGIS Pro, QGIS, AutoCAD. An example could be that map users can save measurement results directly into a GIS layer or geodatabase. An SDK enables you to integrate the viewer into your own application, website, GIS or CAD system.

KEY FEATURES

- ▶ Optimize your investment by sharing mapping data inside or outside your organization.
- ▶ Make 3D point clouds and immersive street level imagery accessible via a web browser or customized applications.
- ▶ Extract features and store directly in your existing databases.
- ▶ Integrate with popular GIS or CAD environments via plugins.
- ▶ SDK makes connection to 3rd party software possible.



Trimble MX Import and Upload

Get your mobile mapping data organized and optimized for publishing. Manipulate imagery and point cloud data from your mobile mapping system.

Trimble MX Publisher

Share your mobile mapping data inside or outside your organization. Connect to external databases for viewing or for updating your existing inventories of assets.

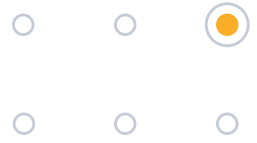
Trimble MX Publisher Plugins

Access your publication data through common GIS and CAD platforms. When needed, a dedicated SDK will help bring mobile mapping publications in your preferred application.

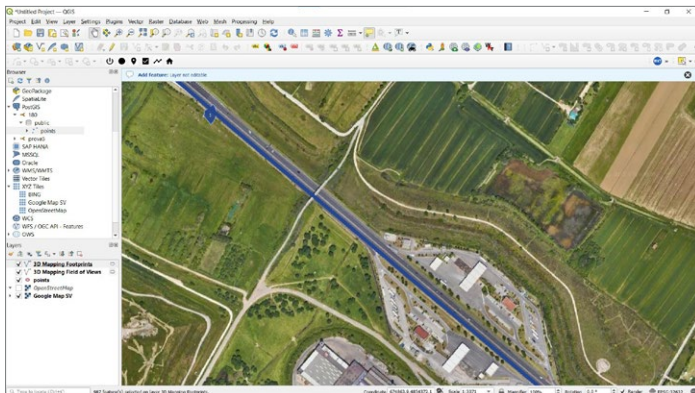


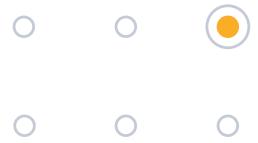
BROCHURE

Trimble MX Publisher



DATA DISTRIBUTION EXAMPLE





SYSTEM REQUIREMENTS:

GENERAL REQUIREMENTS:

Operating System Microsoft® Windows® 7.8 or 10
Processor 64bit, 2.8 GHz quad-core or higher
RAM 16 to 32 GB
Graphic Card No requirements

SERVER DISKS & DISK-SPACE:

A Trimble MX Server installation is about 500MB, preferably installed on a dedicated partition. Reserve 10 to 50 GB free disk-space.

BROWSER:

An up-to-date Chrome, Firefox or Safari browser.

NETWORK:

Internet/Intranet Connection:

For data hosting the server upload and client download speed relative to the average size of the data to be served at the same time needs to be taken into account:

- Minimum server upload speed of 200 Mbps
- Minimum client download speed of 20 Mbps

Port:

Trimble MX Publisher (server) - publishing client communication requires a single port to operate. The default configuration is set to port 1111, it can be reconfigured as needed. Port 80 and 443 are also required to communicate over HTTP and HTTPS respectively. In addition, a Proxy server usage is supported.

Web server:

Trimble MX Publisher includes a web server supporting HTTP/HTTPS and WS/WSS communication.

Client access to publication: If you would like to make your Trimble MX publications available via the Internet, public access to the Trimble MX Server is required. Publications can also be configured for intranet systems.

Web sockets:

Trimble MX Publisher Viewer and Plugins use the WebSockets communication protocol. Some systems will bypass this when using HTTPS.

Contact your local Trimble Authorized Distribution Partner for more information

NORTH AMERICA

Trimble Inc.
10368 Westmoor Drive
Westminster CO 80021
USA

EUROPE

Trimble Germany GmbH
Am Prime Parc 11
65479 Raunheim
GERMANY

ASIA-PACIFIC

Trimble Navigation
Singapore PTE Limited
3 HarbourFront Place
#13-02 HarbourFront Tower Two
Singapore 099254
SINGAPORE